

To learn more about this clinical trial, use your smartphone to watch a video with this QR code:



or visit this website:

<https://anzup.org.au/clinical-trial/anzadapt/>

Trial Registration NCT05393791:

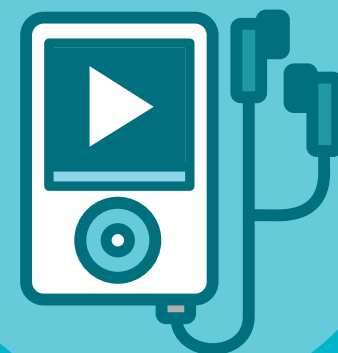
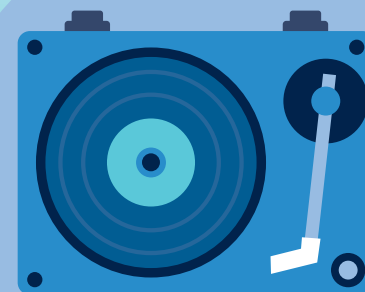
A phase II randomised controlled trial of patient-specific adaptive versus continuous Abiraterone or enZalutamide in people with metastatic castration-resistant prostate cancer, ANZadapt.

ANZUP's mission is to improve the lives of people affected by bladder, kidney, testicular, penile and prostate cancers through practice-changing multidisciplinary collaborative clinical trials.

The Australian and New Zealand Urogenital and Prostate (ANZUP) Cancer Trials Group formed in 2008, bringing together a world-leading multidisciplinary team of doctors, nurses, allied health care professionals, scientists, researchers, and community representatives, all working in areas related to this group of cancers. ANZUP is funded by Cancer Australia.

The HMRI Clinical Trial Unit coordinates the ANZadapt trial in Australia. ANZadapt is supported by a grant from the Anticancer Fund (<https://www.anticancerfund.org/>), and is conducted in collaboration with the Leiden University Medical Centre, Netherlands.

**To learn more or to join ANZadapt please contact [ANZadapt@hmri.org.au](mailto:ANZadapt@hmri.org.au)**



# ANZadapt

A clinical trial for people with prostate cancer that has spread and is growing despite taking hormone injections



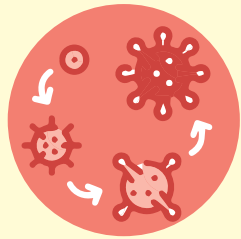
Injections can shrink prostate cancer, but if the cancer grows again, adding another hormone tablet can help.



A clinical trial is the best way to test treatments for cancer. Taking part in a clinical trial is voluntary.



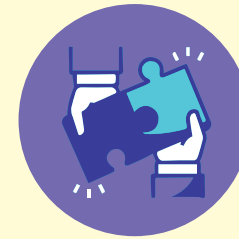
Please read the full information sheet to learn more about the trial. Talk to your loved ones and family doctor.



Unfortunately, the cancer can evolve and grow again, and the hormone tablet and injections stop working.



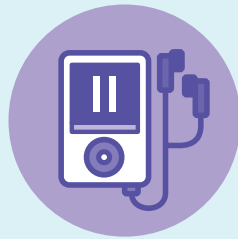
You don't have to take part in a trial, and you can withdraw at any time. Whatever you choose, it will not affect your care.



Please ask any questions that you have. If you are interested, we first check that the trial is right for you.



Adapting how one takes the hormone tablet might help the same treatments control the cancer for a longer time.



In the ANZadapt trial, some people taking hormone tablets will pause when their PSA blood test drops...



You'd have monthly blood tests and calls from the doctor, and like normal care, bone and CT scans, and hospital visits every three months.



The usual way to take hormone tablets is every day, without a break, for as long as the tablets are working.



...and then restart when the PSA rises again... then pause and restart... as long as they are well, and the cancer is controlled.



We also ask to keep samples of your cancer and collect blood samples every three months to learn more about you and your cancer.



We're doing a clinical trial, to try to make the tablets work longer. It's called the ANZadapt clinical trial.



This is a randomised trial; half the people will take their tablets in the usual way, every day, and half will pause and restart their tablets.



To take part in the ANZadapt trial, please talk to your doctor, and read & sign the Patient Information and Consent Form.